



CENTRAL COAST CHAPTER CRFG

In this issue

Next Meeting.....	1
Announcements.....	2
November Meeting Information..	5
CRFG Hats & Rootstock Sales....	6
Perfect Blend Fertilizer.....	7
Plants for Sale.....	9
Scion Store Items.....	9
Upcoming Plant Festivities...	10
Article Submissions.....	11
November Meeting Photos...	12

Chapter Website:

<https://www.crfg-central.org>

Facebook page: Facebook-CRFG-Central Coast

YouTube Channel:

<https://www.youtube.com/@californiararefruitgrowers718/videos>

Chapter chairs contact:

central_coast@crfg.org (underscore between l and c)

For article submissions:

crfgccnewsletter@gmail.com

Next Meeting:

Annual Holiday Potluck, Annual Elections, and Plant Raffle

Location: This meeting is for members only. The location has been emailed to Chapter members in their version of this newsletter.

When:

Saturday, December 14th, 2024

Schedule:

11am-12pm: Setup. Bring in your side dishes and plants

12-1pm: Holiday Potluck

*Please note the following times are approximate. They may be adjusted slightly depending upon how much we are enjoying ourselves:

1:00-1:30: Meeting: Announcements, Officer Elections

1:30-2:30: Plant Raffle

2:30-3:30: Clean up



Join the Planning Committee!

Current Committee Members:

Sharon Lovelady (Chairperson), Larry Hollis, and Elaine Rathburn

We are currently looking for volunteers to join our committee to help find and schedule future meetings. We meet about every 3 months via zoom.

As a volunteer for the program planning committee, you would be asked to find fun and interesting meeting places. We visit the sites to get more information for the newsletter, Facebook, and web-site.

Very minimal hours of volunteer time. If you are not interested in volunteering, we would love your input of places to have our meetings. Personal connections to the hosts are great and very helpful. We are also looking for presenters for our meetings.

If you have any questions feel free to contact Sharon, Larry, or Elaine. Sharon's contact information is 805-601-2900 or smlovelady2011@gmail.com

Upcoming Demonstration Orchard Workdays:

Saturday, January 4th, 2025:
9am-12pm

Saturday, March 1st, 2025:
9am-12pm

Bring:

- Bring side dishes, salads and desserts. Please label your dishes so people can compliment your cooking skills and also know who the dishes belong to at the end of the day.
- Meats (chicken and ham) and beverages (coffee, sodas and water) will be provided.
- Bring your own utensils and plates.
- Bring your fruit trees or edible plants to donate, make sure they are free of pests and weeds, and are labeled with their common and latin names.
- Bring cash or check for:
 - buying raffle tickets for the edible-plant raffle. The money raised goes to the scholarship fund to help Cal Poly students.
 - Pre-ordering your rootstock.
 - We will be selling CRFG hats and CRFG Chapter t-shirts!
 - Pre-ordering for Perfect Blend fertilizer 50 pound bags \$20 each.
- Don't bring pets! *Please remember your "Best CRFG Manners While Visiting Homes, Nurseries, Growers, etc. We never bring pets to meetings or tours and we never even ask if we may!"*
- A volunteer is needed to chair the Refreshments Committee. You have at least 4 able committee members willing to help! For most meetings, you just need to bring water and cups, maybe a few plates and napkins. A little more effort will be needed for members-only meetings such as our yearly BBQ, Scion Exchange Preparation Night (where you will arrange a main dish which could be as simple as ordering pizza and for which you will be reimbursed), and the December potluck. At these meetings you will coordinate with your committee to help members organize their potluck dishes by type, perhaps make an urn of coffee, and make sure all dishes and utensils find their owners at the end of the event. Tables and tablecloths will be provided for you at each meeting. Don't be shy if you are new to the chapter or think you don't know much about fruit trees. That's not a requirement to volunteer. You just need a willingness to help and commit.

2025 CRFG Central Coast Chapter Nominees

2025 Chapter Officers

Co-Chair: Linda Robertson

Co-Chair: Manny Magaña

Secretary: Terri Monell

Treasurer: Evelyn Ruehr

2025 Committees & Team Members

Program Committee: Sharon Lovelady, Chair;
Elaine Rathbun
Don Shealy
Larry Hollis

Hospitality Committee: **Chair Needed;**
Julie Cucchiara
Lucy Jacobs
Mo Moudakis
Seth Waite

Welcoming & Membership Committee: Dara Manker, Chair;
Sharon Lovelady
Erica Williams
Raine Williams
Remy Williams

Scholarship Program: Gabrielle Robbins, Chair;
Linda Robertson
Tucker Schmidt
Dean Harrell
Lauren Garner (ex-officio)

Apple Grafting Team Coordinator: Marv Daniels;
Drina Burns in training

Demonstration Orchard Co-Managers: Dara Manker, Manny Magaña, Jesse Englert

Nominating Committee: Gabrielle Robbins

Publicity - Media Manager: Sheri Thompson

Newsletter Editor: Erica Williams

Webmaster: Dara Manker

CRFG Inc. Liaison: David Maislen

Master Gardeners Liaison: Linda Robertson

Raffle Team: Nell Wade, Lead; Lori Bright, Kathy Longacre, Christie Cutter

Scion Exchange: Manny Magaña, Chair

Scion Exchange Store Manager: Terri Monell

Rootstock Procurement & Sales: Manny Magaña, Dara Manker

November Meeting - Nipomo Native Garden

Bruce Berlin, President of the Nipomo Native Garden (NNG) and our host, shared the history of the garden before leading us on an informative tour.

In his professional capacity, Bruce is a Native Plant Ecologist and Consultant. He specializes in the collection of native plant seeds, which he uses to restore flora in areas affected by construction and other disturbances.

Bruce's expertise makes him uniquely qualified to lead this community-based nonprofit organization. The mission of NNG is "to restore and maintain a 12-acre portion of the Nipomo Regional Park to native habitat, demonstrating the unique character and rich biological heritage of the Nipomo Mesa." According to Bruce, the organization engages approximately 70 volunteers, hosts a volunteer workday on the first Saturday of each month, and distributes a quarterly newsletter.

The garden was initiated in 1992, during a time when many of Nipomo's roads were still unpaved. It officially became a nonprofit in 1993, largely through the efforts of dedicated volunteers. The park is triangular in shape, with a mature oak woodland dominated by Coast Live oaks at the top, and a largely barren field at the lower end at the time of its founding.

Bruce describes it as a "passive park," emphasizing its focus on maintaining the area in its natural state with only native plants. The overarching goal is "to provide a vital public link to the authentic natural flora of the Nipomo Mesa and dunes complex providing hands-on opportunities for education, conservation, restoration, research and recreation." To support these objectives, volunteers have built walking paths, three informational kiosks, and a children's garden featuring a sandbox, tire swing, and a "dream tree" where children are encouraged to write and attach their dreams to the tree. This year, volunteers also completed a new demonstration garden showcasing native California plants.

The dedication of Bruce and the many volunteers who have contributed their time and effort to the Nipomo Native Garden has created a valuable community resource—offering education, fostering environmental stewardship, and providing a serene space for recreation. The NNG continues to develop thanks to the ongoing efforts of its volunteers, offering a valuable opportunity to explore and learn about the region's native plants and their importance in sustainable local landscaping.



Tim snacks - Photo by Dara Manker

CRFG Hats for Sale

CRFG Hats for sale:
\$20 each.

Baseball Cap colors :
Grey,
Denim,
Washed Denim,
Black,
Khaki.
Runner's Cap: White

If you are interested,
please email Dara:
dmanker@gmail.com
She can bring it to the
next meeting if you
are coming. If not,
she'll work out
another arrangement.



Rootstock Sales

Members will be able to pre-order and pay for rootstock at our December and January meetings. They must pick up their orders at the 2025 Scion Exchange on Saturday, Feb. 22nd, or the preparation event at Cal Poly the night before on Friday, Feb. 21st.

There is a members-only discount on the **apple** rootstock at these two meetings, where it will be sold for \$2 each. At the scion exchange, the price will be \$3 each.

Rootstock:

Apple: MM-111 (member pre-order price)	\$2.00
Cherry: Prunus avium (Mazzard)	\$3.00
Plum/Apricot: Marianna 2624	\$3.00
Plum/Apricot: Marianna GF 8-1	\$3.00
Euro/Asian Plums; some Nectarine & Peach: Krymsk 1	\$3.00
Pear: OHxF 97	\$3.00

Perfect Blend Fertilizer

Our chapter will be placing an order for Perfect Blend Fertilizer this year. See the information below:

Perfect Blend Fertilizer (Made in the USA)

Proprietary Process! Perfect Blend fertilizers are made using a proprietary process that produces a high-quality nutrition to soil microbes that are responsible for breaking down minerals for plants while helping to maintain a balanced pH in your soil. Derived From: Chicken Manure, Raw Fish, Elemental Sulfur, Sulfate of Potash. ALSO CONTAINS NON PLANT FOOD INGREDIENTS Soil Amending Ingredient: 5.00% Volcanic Ash

For more information visit : <https://perfect-blend.com>

We need to order in quantities of 40 bags (a pallet) so we can order 1 or 2 pallets based on sales.

Each bag is 50 lbs. Our cost will be \$20 a bag. You can pay by check (made out to David Maislen) or cash. David will be doing the ordering. We will have a sign-up sheet and collect the money at the December 14th meeting. Orders are due on 12/14/24.

The bags will be delivered to David Maislen house, and you can pick it up there.

You can email Sharon Lovelady to pre-order prior to the December meeting.

If you have questions please contact David Maislen at dmaislen@gmail.com or 805-458-1115. After December 7th.

You can also contact Sharon Lovelady at 805-610-2900 or smlovelady2011@gmail.com.



4-4-4

Proprietary Process!

Perfect Blend fertilizers are made using a proprietary process that produces a high quality nutrition to soil microbes that are responsible for breaking down minerals for plants while helping to maintain a balanced pH in your soil.

APPLICATION DIRECTION:

Small Garden - Vegetables: Apply 2 lbs. along the bottom of a 24 foot section of the seed furrow, then cover the fertilizer with a thin layer of soil. Place your seeds on this soil layer, then cover the seeds with an additional layer of soil to the depth recommended on the seed package. For hill plants such as squash and potatoes place one cup in the bottom and sides of the planting hole, followed by a layer of soil, then the seeds. Cover the seeds with ground level soil and then water. For legumes, such as beans and peas, less nitrogen is required. Put half as much Perfect Blend, or one cup every 50 feet, for best results. During the growing season apply an additional 2 lbs. every 50 feet after your plants bloom. Work these plant nutrients into the soil around the plant root zone. A good time to do this is when you are weeding or hilling-up your plants. Always water in newly applied fertilizer.

Field Vegetables & Orchard Applications:

Broadcast - Broadcast up to one ton per acre using conventional spreading equipment. Fertilizer is most efficient if tilled in immediately after application.

Side Banding - Side-band at the rate of one-half ton per acre in most soils. In sandy or poor soils, this rate can be increased.

Hand Application - Applications by precise hand measure are efficient at approximately one-quarter ton per acre.

Wheat - Fertilize in front of drill during seeding at a rate of one-quarter to one-half ton per acre.

Rice - Follow above directions, however, allow at least two weeks before flooding field to provide time for soil micro-organisms sufficient air to full soil food-web integration

New Orchards - Place one pound of PB Organics 4-4-4 in the bottom of the planting hole, cover with at least one inch of dirt and then place tree.

Revitalization of Old Orchards - Drill a 2" hole approximately 12" deep at a distance of 18" - 24" from the trunk of the tree. Fill to the top with fertilizer. Permanent PVC pipes can be placed in hole to prevent the need for re-drilling the following season.

Application Rates - Most crop lands require two applications, one in the spring and one in the fall. High nitrogen crops may require up to three applications during the primary growing season.

Guaranteed Analysis

Total Nitrogen (N).....	4.00%
0.40% Ammoniacal Nitrogen	
0.03% Nitrate Nitrogen	
1.50% Other Water Soluble Nitrogen	
2.07% Water Insoluble Nitrogen	
Available Phosphate (P ₂ O ₅).....	4.00%
Soluble Potash (K ₂ O).....	4.00%
Calcium (Ca).....	7.0000%
Magnesium (Mg).....	0.7000%
0.70% Water Soluble Magnesium (Mg)	
Sulfur (S).....	1.50%

Derived From:

Chicken Manure, Raw Fish, Elemental Sulfur, Sulfate of Potash.

ALSO CONTAINS NONPLANT FOOD INGREDIENTS

Soil Amending Ingredient:

5.00% Volcanic Ash

Information regarding the contents and levels of metals in this product is available on the internet at <http://www.aspfco.org/metals.htm>

Perfect Blend, LLC

DBA Perfect Blend Organics
Guaranteed by Perfect Blend Organics
188 106th Avenue NE, Suite 401 Bellevue, WA 98004
Phone: 866.456.8890

www.perfect-blend.com
© 2015 Perfect Blend Organics

MADE IN USA

MANUFACTURED IN 2016



Net Weight 50 lbs. (22.67kg)

Rare Plants for Sale!

Our club was fortunate enough to receive donations of unique plants from Jack Swords, Seth McMillan, Manny Magaña, and Bob Simola that are now being offered for sale to our members! Sales from these plants will help the club provide more scholarship opportunities!

Send your purchase request to Manny: mannym25@gmail.com Please include your full name, phone number, and type and quantity of plant requested.

If you have some rare plants that you would like to contribute to the club, please reach out! Any and all donations are appreciated and sales go to a good cause!

Plant	Quantity Available	Pot Size	Price
Apple, Fuji	1	1 gallon	\$15
Apple, Fuji	4	5 gallon	\$25
Apple, grafted, unknown variety	1	1 gallon	\$15
Apple, grafted, unknown variety	1	5 gallon	\$20
Apple, Hawaii	1	1 gallon	\$15
Apple, Sun Downer	2	1 gallon	\$15
Avocado, Edranol	1	5 gallon	\$25
Blackberry	4	1 gallon	\$10
Capulin Cherry	4	1 gallon	\$15
Casava	1	1 gallon	\$10
Cherimoya	1	1 gallon	\$10
Cherimoya	1	2 gallon	\$15
Cherry of the Rio Grande	9	2 gallon	\$15
Cherry of the Rio Grande	4	5 gallon	\$25
Dragon Fruit	10	1 gallon	\$10
Fig, unknown variety	1	1 gallon	\$5
Fig, unknown variety	1	2 gallon	\$10
Fig, White Marseillaise	1	2 gallon	\$15
Goldenberry	1	4 inch	\$1
Goldenberry	1	6 inch	\$10
Lucuma	2	1 gallon	\$15
Macadamia	7	1 gallon	\$10
Macadamia	1	5 gallon	\$20
Pitangatuba	1	2 gallon	\$15
Pomegranate	1	2 gallon	\$10
Surinam Cherry	4	5 gallon	\$20
White Mulberry	1	1 gallon	\$10
White Mulberry	3	5 gallon	\$20
White Sapote	1	1 gallon	\$10
White Sapote	1	2 gallon	\$15

Pheromone Loops and Scion Store Items Still Available!

If you missed the scion store or realized you forgot something, now is your chance to get it before it is gone!

Here is what is still available:

Bird netting 35x50 ft extra heavy grade Raschel knitted \$80
Bird netting 17x100 ft medium black and white netting \$70
Pruners \$15
Budding knives \$15
Green grafting tape \$2
Aluminum tree tags \$4/10ct.

Pheromone loops have arrived! Codling moths are key pests of apples and pears. Pheromone loops deceive the male moth, thereby helping to disrupt the mating cycle. Place 2 to 3 loops in the top third of your apple and pear trees. Petals should be about 90% off and small fruit setting before you loop your trees!

Please contact Terri Monell at 805-546-8981 if interested or you have questions. Pick up is in SLO.

A Request from Terri:

CRFG and friends,

If you have been collecting, or are willing to start collecting, the plastic sleeves that come with the hard copy newspapers, I would greatly appreciate them and your efforts saving them. These plastic sleeves are a perfect length and size for the pheromone loops that I sell to the masses. Bring them to any meeting or contact me if you are willing to drop them off at my home.

Reduce-Reuse-Recycle-Repurpose!

That is my motto!

Kindly,

Terri Monell



Upcoming Plant Festivities

Dear Members,

One Cool Earth will be hosting a pruning workshop for Shandon Elementary School families and their staff.

Date: Friday January 3, 2025

Time 1pm - 3pm

Location: Shandon Elementary School

Restrooms on site

Sharon Lovelady will be the contact person for the event.

I would like to have CRFG members volunteer to demonstrate on the school's fruit trees. It is a small orchard. Semi dwarf fruit trees and pomegranates.

There will be snacks and cider.

You can contact me for questions.

I will have a sign up sheet at the December meeting.

You can use the flyer or just the info.

Call me if you have any questions.

Thank you!

Sharon Lovelady
smlovelady2011@gmail.com

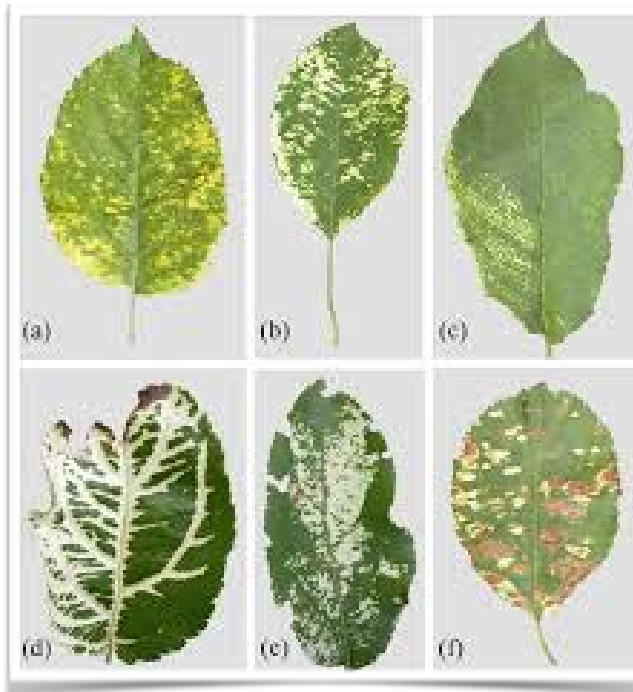


Article Submissions

Don't bring diseased scions to the scion exchange

Submitted by Erica Williams

At last year's scion exchange, my family picked up some new apple scions to graft onto our multi-graft apple tree. It is the biggest tree we have and the one we tend to get the most excited about. We carefully grafted our new scions and waited to see if they would be successful. After a few months we were excited to see that they had been successful! Unfortunately, our excitement was dampened when leaves started turning white and yellow. It was the dreaded Apple Mosaic Virus (AMV), confirmed by a Cal Poly pathology professor. We know our tree was infected by one of the scions because there are no known vectors for transmission of AMV. The only way an apple tree can get AMV is by grafting diseased tissue. Perhaps the person that brought the diseased scion wood was not aware that their tree was affected by this virus? The most noticeable symptom of AMV is the pale to bright cream spots on the spring leaves as they open. The spots can become necrotic after exposure to sun and heat. Infected trees will suffer a reduction in yield. Some varieties are more resistant and may have no reduction but others such as 'Golden Delicious' and 'Jonathan' are severely affected and may have a 50% reduction. There is no cure or treatment of this virus. The same virus can also infect plums and roses. We are still trying to decide the fate of our infected tree. We can no longer take scions from it and we run the risk of a root graft infecting nearby apples. Most likely, the tree will be destroyed to prevent the possible future spread of the virus. Three years worth of growing and grafting will be lost because someone brought a diseased scion to the exchange. There are members who have massive trees with decades of genetic material that could be compromised if they were to pick up a diseased scion and add it to their tree. Please DO NOT bring diseased scions to the exchange. If your tree has had symptoms and you are unsure of the diagnosis, consult with other members or when in doubt, don't bring it.



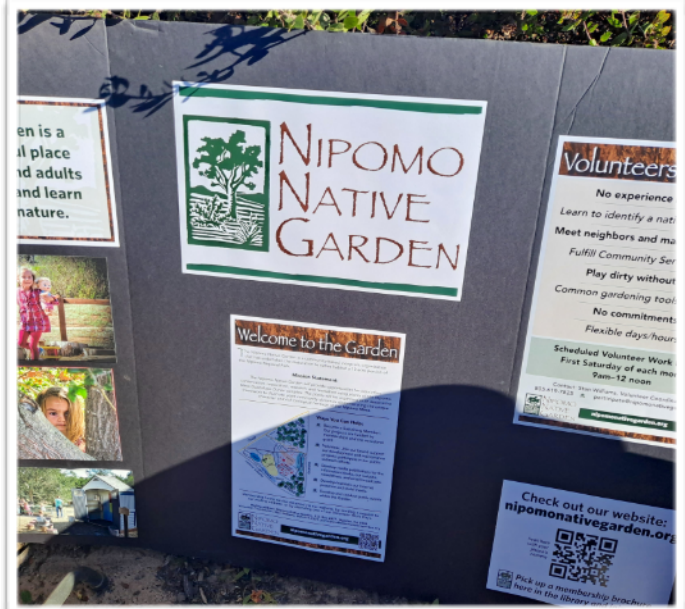
November Meeting Photos



Bruce receives a hat - Photo by Dara Manker



Bruce speaks to the attendees - Photo by Dara Manker



Nipomo Native Garden display - Photo by Dara Manker

November Meeting Photos



Gabrielle talks to the group - Photo by Dara Manker



The group and the information kiosk - Photo by Dara Manker



Linda makes announcements - Photo by Dara Manker



Nipomo Native Garden Display - Photo by Dara Manker

November Meeting Photos



Bruce begins the tour - Photo by Dara Manker



Children's garden - Photo by Dara Manker



Demonstration garden - Photo by Dara Manker

November Meeting Photos



Attendees look at the riparian zone garden - Photo by Dara Manker



The rock snake - Photo by Dara Manker



Information about the rock snake - Photo by Dara Manker