

# CENTRAL COAST CHAPTER CRFG

## In this issue

CENTRAL COAST CHAPTER CRFG.....	1
Next Meeting.....	1
Announcements.....	4
December Meeting: Annual Holiday Potluck & Plant Exchange.....	9

## Chapter Website:

<https://www.crfg-central.org>

## Facebook Page:

[Facebook-CRFG-Central Coast](https://www.facebook.com/Facebook-CRFG-Central-Coast)

## YouTube Channel:

[https://www.youtube.com/  
@californiararefruitgrowers718/  
videos](https://www.youtube.com/@californiararefruitgrowers718/videos)

## Chapter chairs contact:

[central\\_coast@crfg.org](mailto:central_coast@crfg.org)  
(underscore between 1 and c)

## For article submissions:

[crfgccnewsletter@gmail.com](mailto:crfgccnewsletter@gmail.com)

## Next Meeting

### Saturday, January 10<sup>th</sup>, 2026 Annual Pruning Workshop

Rain will not cancel the classroom portion of this event.

#### *Schedule:*

*(Note: these times are approximate and may change slightly due to actual time needed.)*

**12:30-1:** Set up crew

**1:00-1:30:** Socializing and refreshments.  
Bring a snack to share and your own water.

**1:30:** Chapter business meeting

**1:45-3:00:** Pruning lesson. Afterward, weather permitting, we all walk to the orchard (approximately 1,000 ft from the classroom), where we can ask our questions and practice pruning.

#### *Bring:*

Hand clippers and wear appropriate shoes and clothing for outdoor activity. You will need to sterilize your pruning tools in the orchard before using them to prevent spreading diseases. Spray bottles of isopropyl alcohol will be provided for this purpose.

People are welcome to bring garden tools that need sharpening. Marv and Walt will sharpen them for a donation.

Don't bring pets! Please remember your "Best CRFG Manners While Visiting Homes, Nurseries, Growers, etc. We never bring pets to meetings or tours and we never even ask if we may!"

***Where:***

Cal Poly Crops Science Classroom 17-101/102, corner of Highland Dr and Mt. Bishop Rd in San Luis Obispo.

***Additional Info:***

The public is welcome! Please bring a friend.

Restrooms will be available.

***Location & Parking:***

No permit is needed.

Due to construction, parking will no longer be available at the Crops Unit. The H1 lot on Mt. Bishop Drive is the only option for parking.

**Warning: *DO NOT PARK* along the side of Highland Drive nor Mt. Bishop Rd as people have done in the past. The Cal Poly Police will ticket you!**

***Directions (see map on next page)***

1. In San Luis Obispo, take Santa Rosa St. (aka Hwy 1) to Highland Drive.
2. Turn east onto Highland Drive.
3. Turn left at Mt. Bishop Rd.
4. In approximately 900 feet, you will see the H1 parking lot on your left. Park in the parking lot and walk back down Mt. Bishop Rd. to the Crops Unit at the corner with Highland Dr.



### ***No Pets***

Don't bring pets! Please review "Our Best CRFG Manners While Visiting Homes, Nurseries, Growers, etc." below. We never bring pets to meetings or tours, and we never even ask if we may!"

### ***Our Best CRFG Manners While Visiting Homes, Nurseries, Growers, etc.***

1. We never bring pets to meetings/tours and we never even ask if we may!
2. We do our best to use public facilities or our own restroom before the meeting.
3. We do our best not to ask to go inside the hosts' home.
4. We never pick fruit, flowers, foliage, weeds, seed pods and we never even ask.
5. We do our best to car pool and park with great respect to our host and the neighborhood.
6. We never talk when our host is talking. We do our best to stay up close when given a tour.
7. We never "take over" the tour and tell everyone how we do it at our home!!
8. We have thoughtful questions but try not to ask questions that embarrass our host.
9. We do our best to help our host feel good, feel appreciated. We clean up our mess.
10. We stay on the path, with our host ...and never go walking around on our own unless given permission by the host.
11. At the end of the tour, we make a special effort to thank the host. We "gather up" and have some sort of "closure" to the tour.
12. We even write thank you notes when we get home, especially if we asked a lot of questions, were impressed, were surprised, were treated well. We write thank you notes even when we are not the leader.

---

## Announcements

---

### *New Chapter Officers & Committee Members For 2026*

Our chapter voted in the following officers and committee/team members unanimously at our December 14, 2025 meeting. Marv Daniels received an award created by Jenny and Tom, thanking him for his over 25 years of service on the School Apple Grafting Program. We were also very excited to announce that Walt Mark will be stepping up to coordinate this effort in 2026!

A huge thank you to all of these volunteers for their willingness to step up and make our chapter viable.

#### **2026 Chapter Officers**

**Co-Chairs:** Linda Robertson, Manny Magaña

**Secretary:** Terri Monell

**Treasurer:** Evelyn Ruehr

#### **2026 Committees & Team Members**

**Program Committee:** Sharon Lovelady, Chair;  
Claudia Callwood, Dean Harrell, Steve Johnson, Teresa Lees, Don Shealy

**Welcoming/Membership Committee:** Dara Manker, Chair; Sharon Lovelady  
*We still need volunteers to help at the sign-in table before meetings – greeting attendees and sharing info about CRFG.*

**Hospitality Committee:** Drina Burns and Madison Rasmussen, Co-chairs

**Scholarship Program:** Linda Robertson, Chair;  
Rebecca Bishop, Patty Morrison, Lauren Garner (ex-officio)

**Plant Propagation Team:** Tucker Schmidt, Lead;  
Marv Daniels, Larry Hollis, Manny Magaña, Dara Manker, Gabrielle Robbins,  
Robert Scott, Jack Swords, Seth Waite

**Apple Grafting Team:** Walt Mark, Lead;  
Marv Daniels, Manny Magaña, Jim Ritterbush, Linda Robertson.

**Demonstration Orchard Co-Managers:** Dara Manker, Manny Magaña, Jesse Englert

**Publicity/Media Manager:** Sheri Thompson

**Newsletter Editor:** Michael Kurland

**Webmaster:** Dara Manker

**CRFG Inc. Liaison:** Linda Robertson

**Master Gardeners' Liaison:** Linda Robertson

**Scion Exchange:** Manny Magaña, Lead

**Scion Exchange Store Manager:** Terri Monell

**Rootstock Procurement & Sales Team:** Manny Magaña, Dara Manker

**Volunteers Still Needed:**

- **Nominating Coordinator:** Needed
- **Volunteer Coordinator:** Needed
- **Raffle Team:** *Lead needed*; Kathy Longacre, Jenny Weaver

**If you are interested in volunteering, please contact Manny Magana and Linda Robertson at [crfg\\_central@crfg.org](mailto:crfg_central@crfg.org).**

***Our New Newsletter Editor Wants Your Photos and Stories!***

Many, many thanks to Michael Kurland for volunteering to be the Chapter Newsletter editor in 2026!

Michael will be gathering your stories and photos for upcoming issues.

Do you have a helpful tip about growing or grafting a favorite tree? Or maybe a beautiful shot of your fruit tree in full bloom? We'd love to see it!

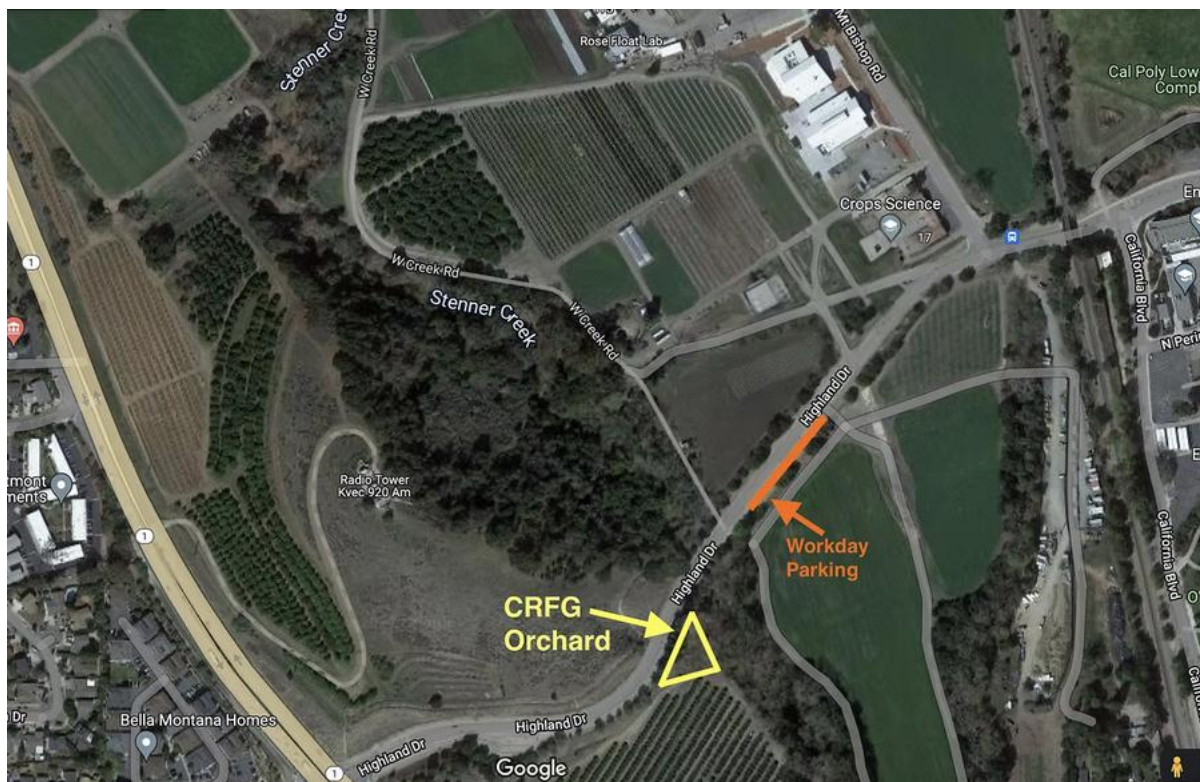
Send your submissions to [crfgccnewsletter@gmail.com](mailto:crfgccnewsletter@gmail.com) by the 15th of the month. We can't reprint copyrighted articles, but if you come across something interesting online, we can include a link to it so that others can enjoy it.



***Next Orchard Maintenance Workday:  
Saturday, January 3<sup>rd</sup>, 2026, 9 am - 12pm***

Please join us on Saturday, January 3<sup>rd</sup> to help clean up the orchard for the Annual Pruning Workshop that will take place the following weekend. We'll be fixing the perimeter fence, pulling invasive weeds, raking up fallen branches, tidying up the area under the Sycamore tree, taming the passion fruit, filling squirrel holes, etc. There will be snacks and water. Please bring your gloves, suitable shoes, and tools for eradicating weeds and pruning.

No parking permits required on Saturdays.



**Directions:**

1. Take Hwy 1 to Highland Dr.
2. Turn east on Highland and proceed approximately 0.3 miles.
3. When you see the CRFG sign on the right, drive up the ramp and turn immediately right onto the dirt road beside the bike path. Do not drive past the fence and into the field.
4. Drive back toward the CRFG orchard. You'll see other cars parked in that area.

### ***Rootstock Pre-Orders For 2026***

Our chapter has purchased the following rootstock for 2026. It is due to arrive Mid-February, and will be available for pickup at the Scion Exchange (Saturday, Feb. 28).

*Members get a pre-order discount rate up until Friday, Feb. 27<sup>th</sup>. Members should plan to place their pre-orders at the January meeting. Cash and check are preferred. Member rootstock orders will **not** be accepted via email.*

Note: Due to the interest of one of our members, we purchased 50 apple “Geneva 969” rootstock for our members to experiment with. These are only available to members and are limited in quantity, so if you are interested, please place your order at the Jan. meeting.

For details about these rootstock, see: <https://tinyurl.com/mtuzfpwh>

<b>2026 Rootstock</b>			
<b>Rootstock</b>	<b>Variety</b>	<b>Members Only Pre-order Price</b>	<b>Price at Scion Exchange</b>
Apple	MM-111	\$3	\$4
Apple	Geneva 969 (new – for members only!)	\$3	\$4
Cherry	Prunus avium “Mazzard”	\$3	\$4
Plum/Apricot/ some almonds	Prunus marianna 2624	\$3	\$4
Plum/Apricot	Prunus marianna GF 8-1	\$3	\$4
Pear	Pyrus OHxF97	\$3	\$4
Peach/Nectarine	Prunus persica “Nemaguard”	\$4	\$5

## ***Things You Might Not Know About Our Chapter Website***

<https://www.crfg-central.org/>

### **I. Check out our FAQ page:**

<https://www.crfg-central.org/faq>

- Find an arborist to prune your fruit trees
  - Learn about chill hours and low chill fruit tree selection
  - Choose varieties to extend your harvest throughout the year
  - Learn what members have to say about their experiences growing fruiting plants on the Central Coast
  - Learn to treat Peach Leaf Curl
  - Learn to make Hoshigaki
- 

### **2. Select the “About” menu item to:**



- check out Tom Sheldon’s excellent writeup of our chapter’s origins from his interview with founding member Jack Swords.
  - view our current chapter board and committee members.
  - get information about joining or renewing your membership with our chapter and the State CRFG organization.
- 

### **3. Scion Exchange:**

<https://www.crfg-central.org/scion-exchg>

- Review what to bring.
- Print out labels for the bags of scions you’re bringing.
- Review how to cut scions for the exchange.



---

## December Meeting: Annual Holiday Potluck & Plant Exchange

---

Our annual Holiday Potluck & Plant Exchange (members only) was held on a very sunny December 14<sup>th</sup> day. We enjoyed delicious food and engaging conversations, sold CRFG merchandise, placed our rootstock orders, and sent many plants off to new homes for the holidays.

Thank you for all the volunteers and our hosts Pat & Mo for making this event possible!



*Did you lose these reading glasses?  
Contact us at [crfg\\_central@crfg.org](mailto:crfg_central@crfg.org).*



*Terri discusses the CRFG merch for sale.*



*Sharon discusses upcoming meetings.*  
Photos by Dara Manker





HEAR YE, HEAR YE, GOOD FOLK AND  
KINDRED SPIRITS OF THE ORCHARD!

LET ALL TAKE NOTE OF MASTER MARV  
WHOSE STEADY HAND AND NOBLE ART  
HATH BOUND BRANCH TO ROOT AND  
LIFE UNTO LIFE.

THROUGH HIS CRAFT, OUR TREES BEAR  
RICHER FRUIT, AND OUR LAND  
REJOICETH IN HIS TOIL.

IN HONOR OF SUCH DEVOTION, WE  
BESTOW UPON HIM THIS HUMBLE TOKEN  
OF OUR GRATEFUL ESTEEM.

LONG MAY HIS GRAFTS FLOURISH, AND HIS  
NAME BE SPOKEN WITH PRAISE BENEATH  
THESE BOUGHS!

PRESENTED TO MARVIN DANIELS,  
GRAFTING COORDINATOR, 2024-2025  
CALIFORNIA RARE FRUIT GROWERS CENTRAL COAST  
CHAPTER  
DECEMBER 13, 2025



*This award was handcrafted by Jenny and Tom, with a little help from AI. It was presented to Marv for his years of grafting service. Photo by Jenny Weaver.*



Marv was presented with this award and an honorary basket of apples for his years of service in the Apple Grafting Program. Says Marv, "In 1998 Joe [Sabol] asked me [to help with the apple grafting program], but I declined. In 1999 Joe asked again in a different manner, and I said yes. In 2023 Joe was no longer able. So I was the apple grafting Coordinator in 2024 & 2025." Photo by Jenny Weaver.





*Walt, our new Apple Grafting Coordinator, tells us a little bit about himself. Walt and his wife Sarah (far right) joined our chapter in 2023. Photo by Jenny Weaver.*



*Walt and Marv have a chat. Photo by Jenny Weaver.*

**Walt Mark, our new Apple Grafting Coordinator,** is a Faculty Emeritus from Cal Poly and a Registered Professional Forester in California. He and his wife Sarah live in Los Osos. Walt earned a BS in Forest Management at Utah State and a MS in Forest Sciences and a PhD in Botany and Plant Pathology at Colorado State. He worked for the US Forest Service in Wyoming and Colorado for 4 years and taught forestry and worked in administration at Cal Poly SLO for 43 years. Courses he taught included: Forest Health, Urban Forestry, Silviculture, Forest Practices, Dendrology, Resource Ecology and Ecosystem Management. He was the Assoc Dean of the College of Agriculture for 6 years, a department head and the Director of Swanton Pacific Ranch in Davenport for 8 years. Walt was on the Oak Mortality Task Force Board and Chair of the Monitoring Committee. He was a member of the Pitch Canker Task Force and chaired that group. He consults in forestry today with Collins Pine Company and doing sustainable forestry certifications for both the Forest Stewardship Council and the Sustainable Forest Initiative.





*Photos by Tom Sheldon*





*Photos by Tom Sheldon*





*Photos by Tom Sheldon*





*Photos by Tom Sheldon*





*Photos by Tom Sheldon*







Photos by Jenny Weaver





*Tom conducts the auction. Photo by Jenny Weaver*



*Going once... going twice.... Photo by Dara M.*



*Superfluous CRFG items up for auction. Photo by Dara Manker*



*Larry is now the proud owner of this huge dolly donated by Trudi. Photo by Terri Monell*